

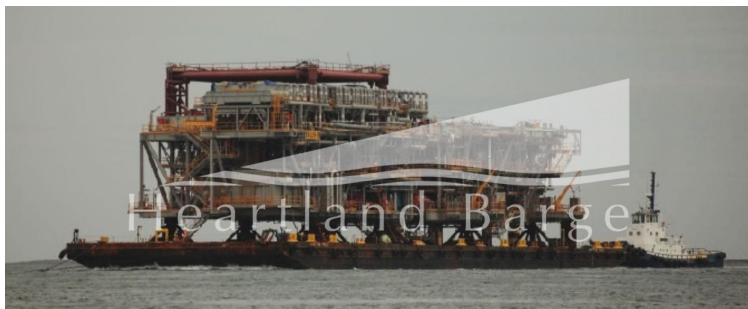
Heartland Barge | Illinois

618-281-4515

**Contact:** scott.korlin@hl-companies.com

**Vessel #:** 16496 / BG

**Price:** \$0



---

## NOTES

4 Available

---

## REGISTRATION

---

**Year Built:** 2007

---

**Flag:** Singapore

---

**Hull Construction:** Steel

---

**Deadweight:** 11500

---

**Classification:** ABS + A1 Deck/Tank Barge

---

**Gross Ton:** 4905

---

**Net Ton:** 1471

---

## LOCATION

---

**Location:** Batam, Indonesia

---

## MEASUREMENTS

---

**Length:** 330 FT./108.27 MT.

---

**Beam:** 100 FT./32.81 MT.

---

**Depth:** 20.0 FT./6.56 MT.

---

**Operating Draft:** 15580.52 FT./4749.0 MT.

---



## HEARTLAND BARGE

### MARINE EQUIPMENT SPECIALISTS

Details pertaining to this vessel are obtained from sources believed to be reliable, however we can not guarantee their accuracy. Buyers should instruct surveyors and agents to investigate details for validity. All offers are subject to prior sale, changes in price and / or inventory, and without notice.

#### **ADDITIONAL IMAGES:**